



INTEQ

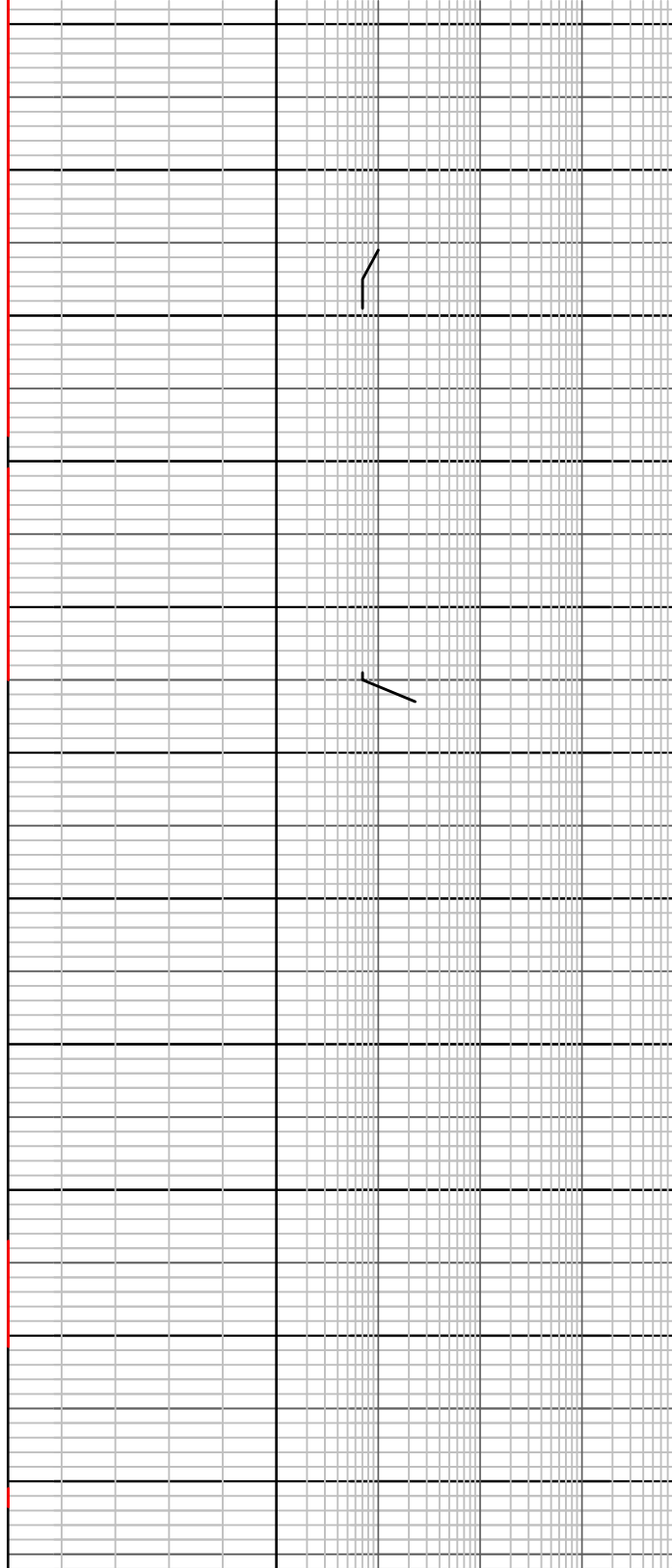
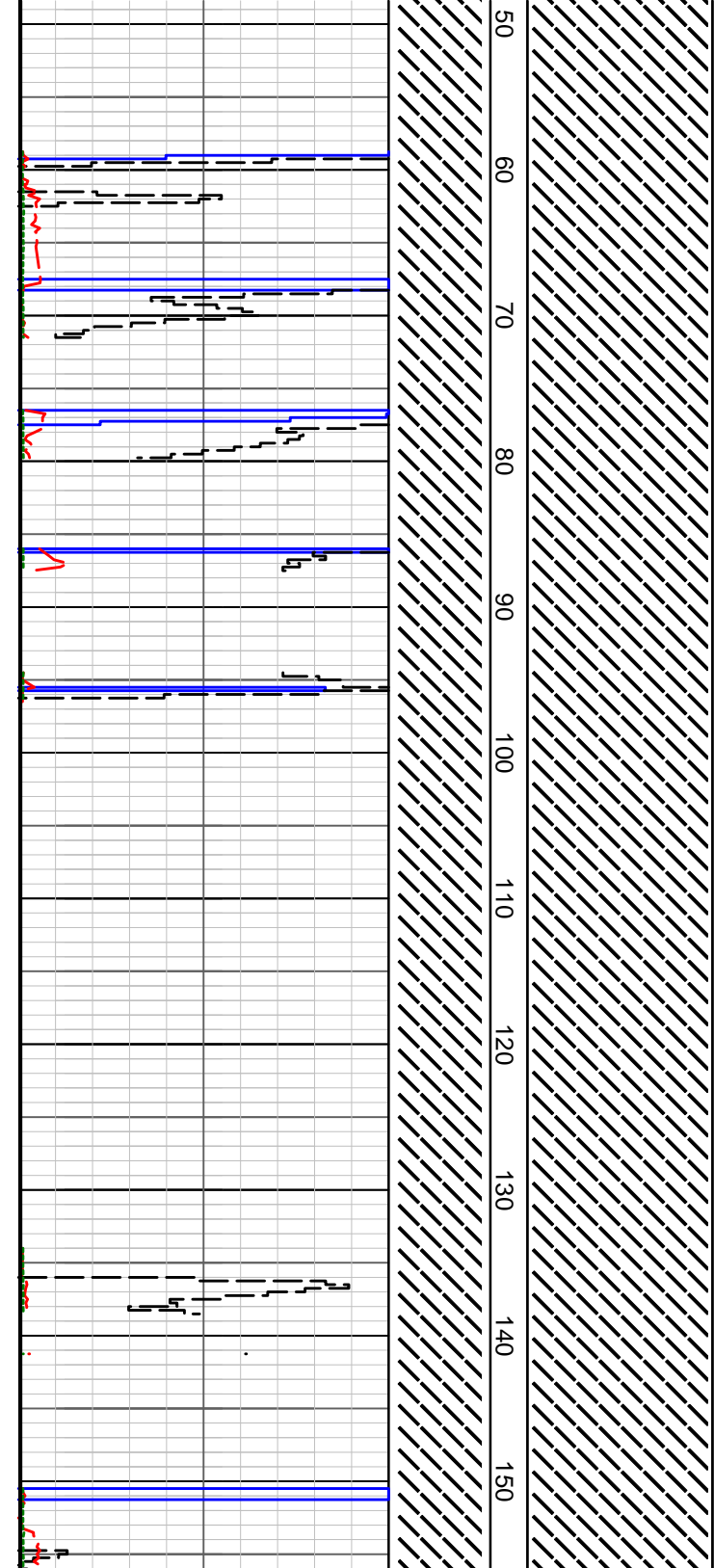
Company : Karoon Gas Pty Ltd
 Well : Megascalides 1 Re-ST1
 Interval : -15.00 - 1806.18 meters
 Created : 18/Dec/2006 11:30:10 AM



FORMATION EVALUATION LOG

RATE OF PENETRATION ROP (0-50m/hr) Backup ROP (50-200m/hr) WOB (klb) TORQUE AVG	INTERPRETED LITHOLOGY	MD meters 1:500	LITHOLOGY	CORE	OIL SHOWS	TOTAL GAS	CHROMATOGRAPH	REMARKS
						0.1 0.2 0.3 0.4 0.5 %	1 Methane ppm 10000 1 Ethane ppm 10000 1 Propane ppm 10000 1 iso-Butane ppm 10000 1 n-Butane ppm 10000 1 iso-Pentane ppm 10000 n-Pentane ppm 10 100 1000 10000	
		-10						
		0						
		10						
		20						
NB#1 SEC DBS 8 1/2" JETS 3x20 Depth in: 0 m: Depth out: 534.5m / 7.5 hrs		30						
		40						

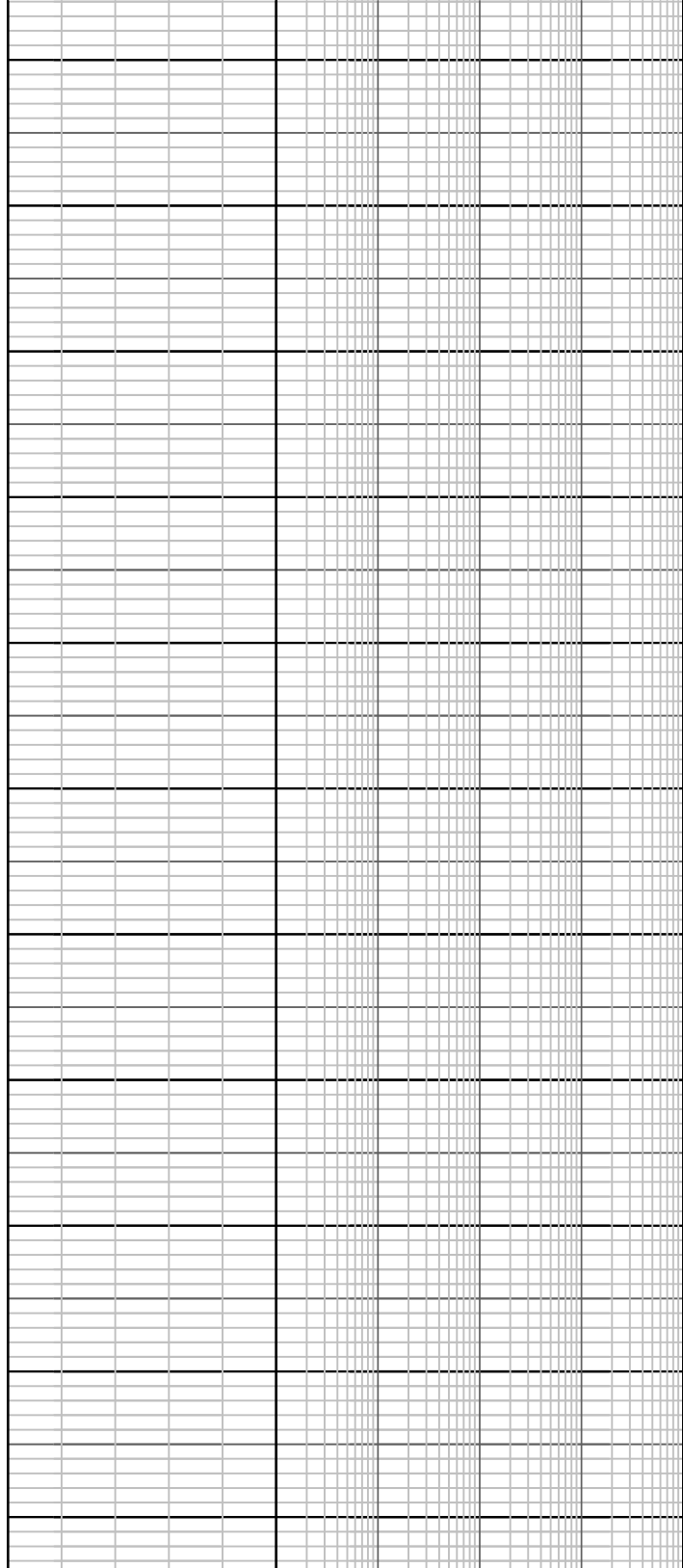
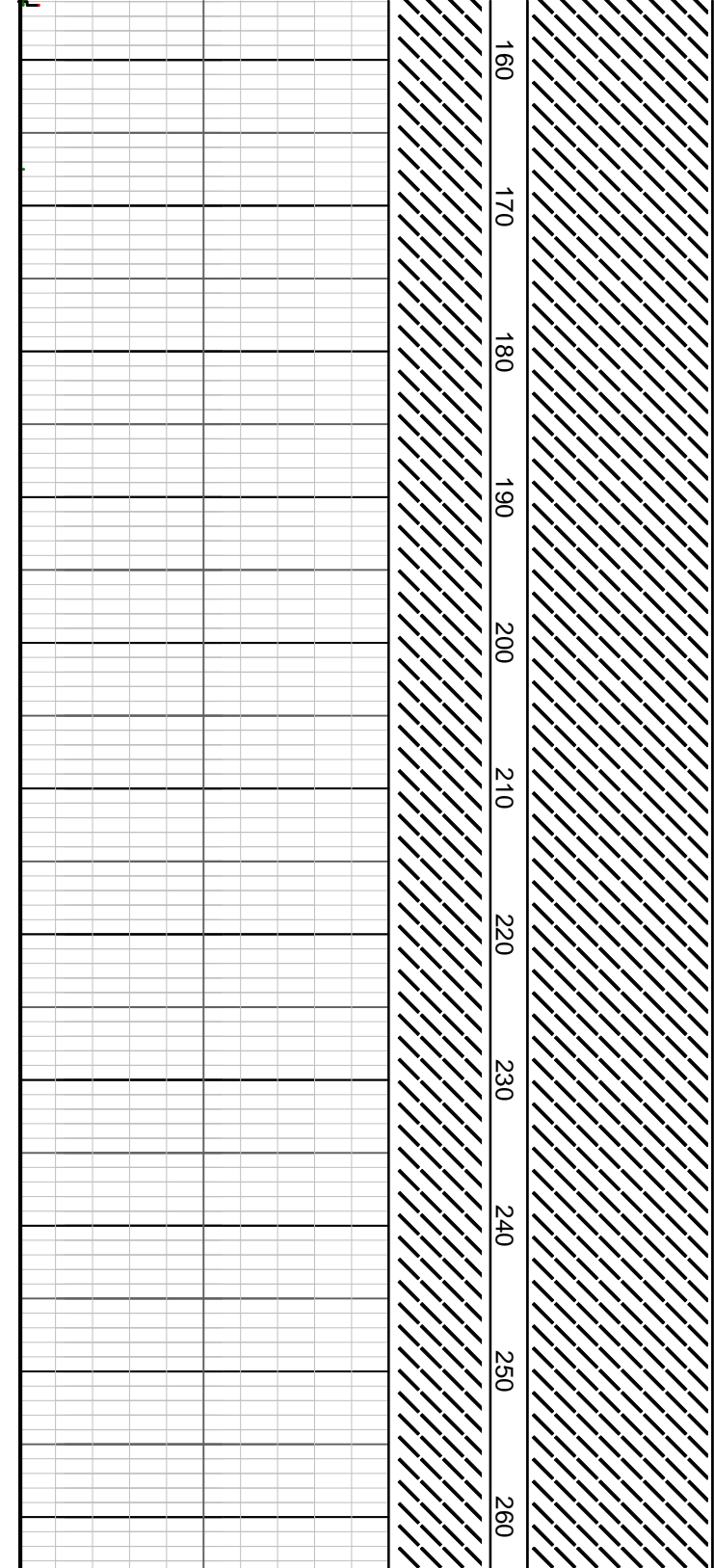
Company: Karoon Gas Australia Pty Ltd.
 Well: Megascalides 1 Re-ST1
 Permit: PEP 162 EL 4537
 RT-GL 5.2m (all depths on log) ref
 Re-entered date: 14th December 2006



Survey @ 52.90m
Incl 0.30°
Azim 62.0°
TVD 52.90m

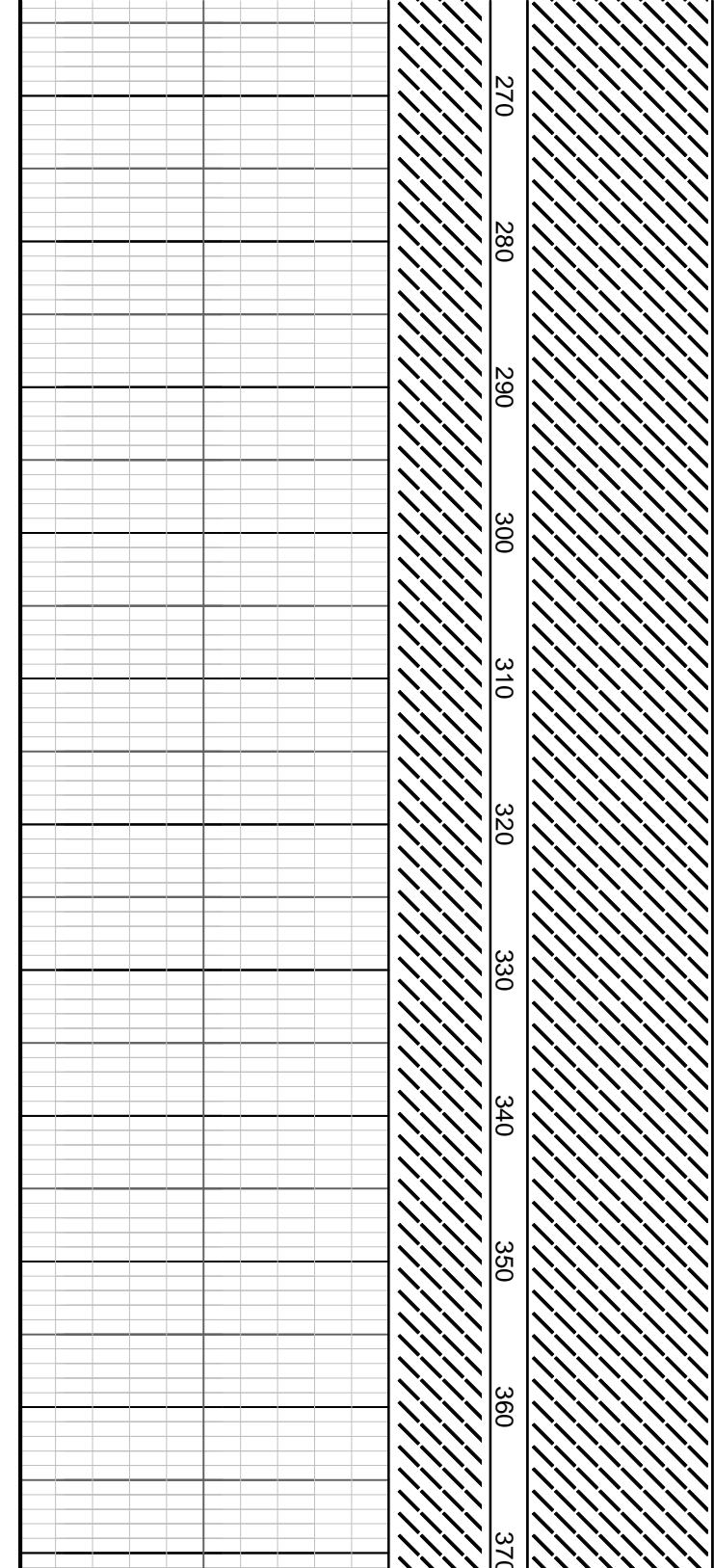
Survey @ 107.47m
Incl 0.30°
Azim 62.0°
TVD 107.47m

Survey @ 144.87m
Incl 0.60°
Azim 62.01°
TVD 144.87m

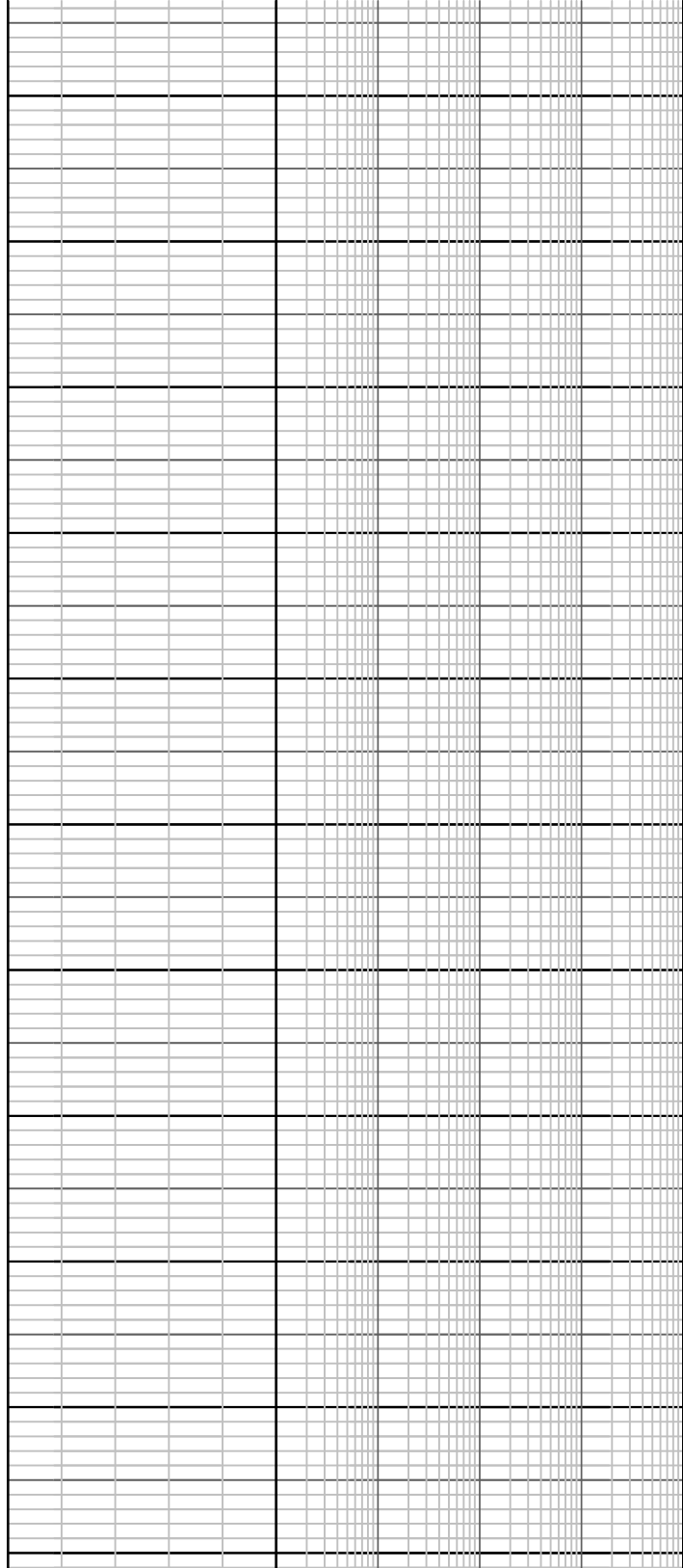


Survey @ 210.47m
Incl 0.70°
Azim 62.00°
TVD 210.47m

Survey @ 247.99m
Incl 0.90°
Azim 62.00°
TVD 247.98m

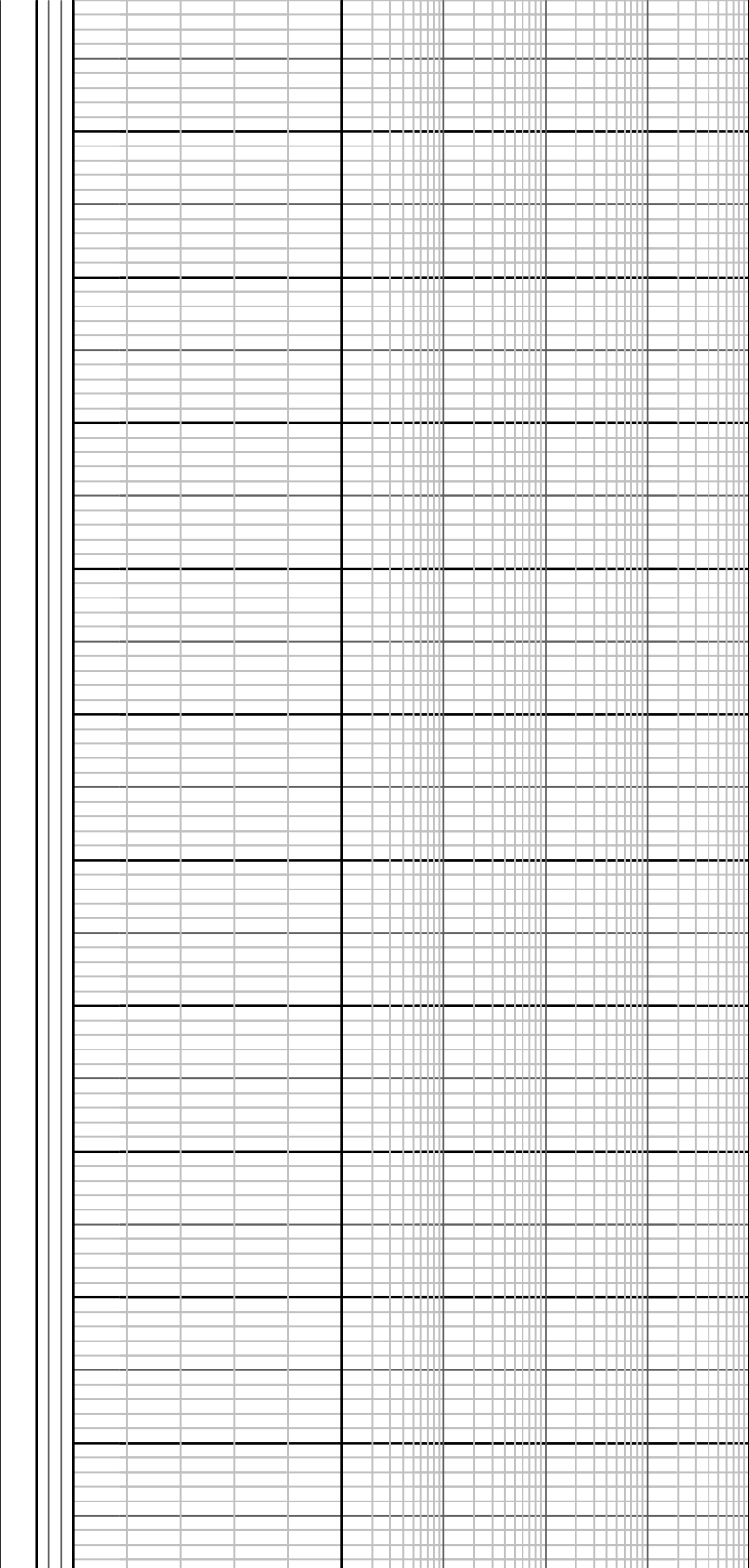
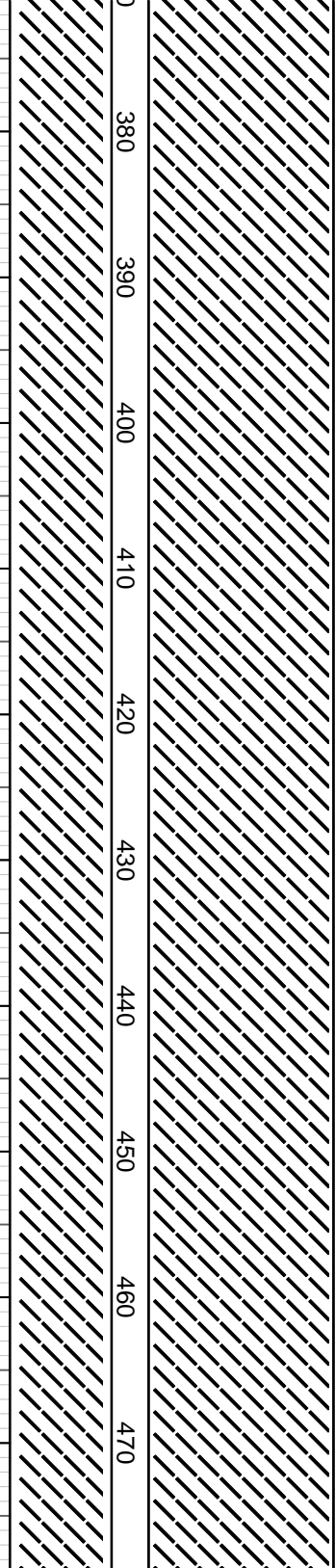


270
280
290
300
310
320
330
340
350
360
370

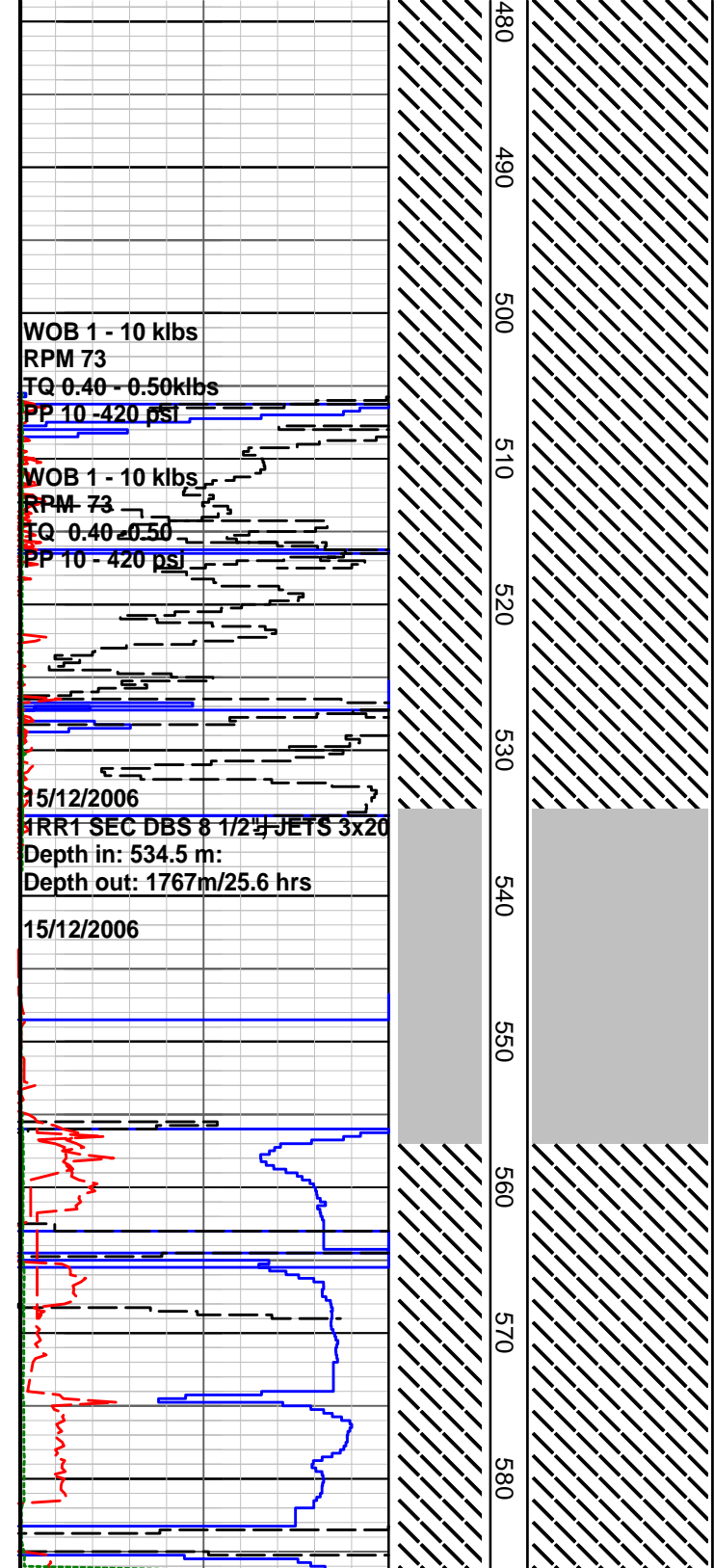


Survey @ 285.51m
Incl 0.90°
Azim 62.01°
TVD 285.50m

Survey @ 360.55m
Incl 0.90°
Azim 62.01°
TVD 360.53m



Survey @ 398.07m
Incl 1.00°
Azim 62.00°
TVD 398.04m



480
490
500
510
520
530
540
550
560
570
580

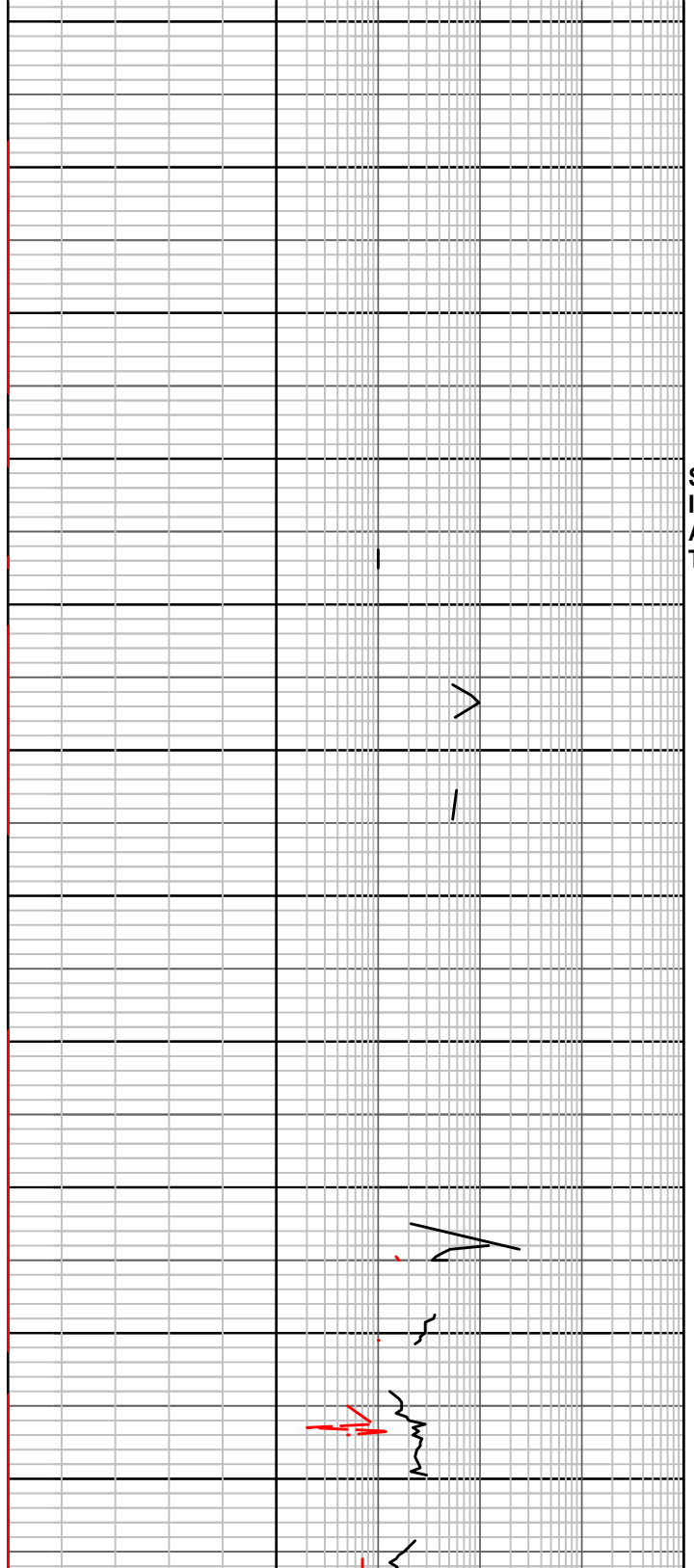
WOB 1 - 10 klbs
RPM 73
TQ 0.40 - 0.50 klbs
PP 10 - 420 psi

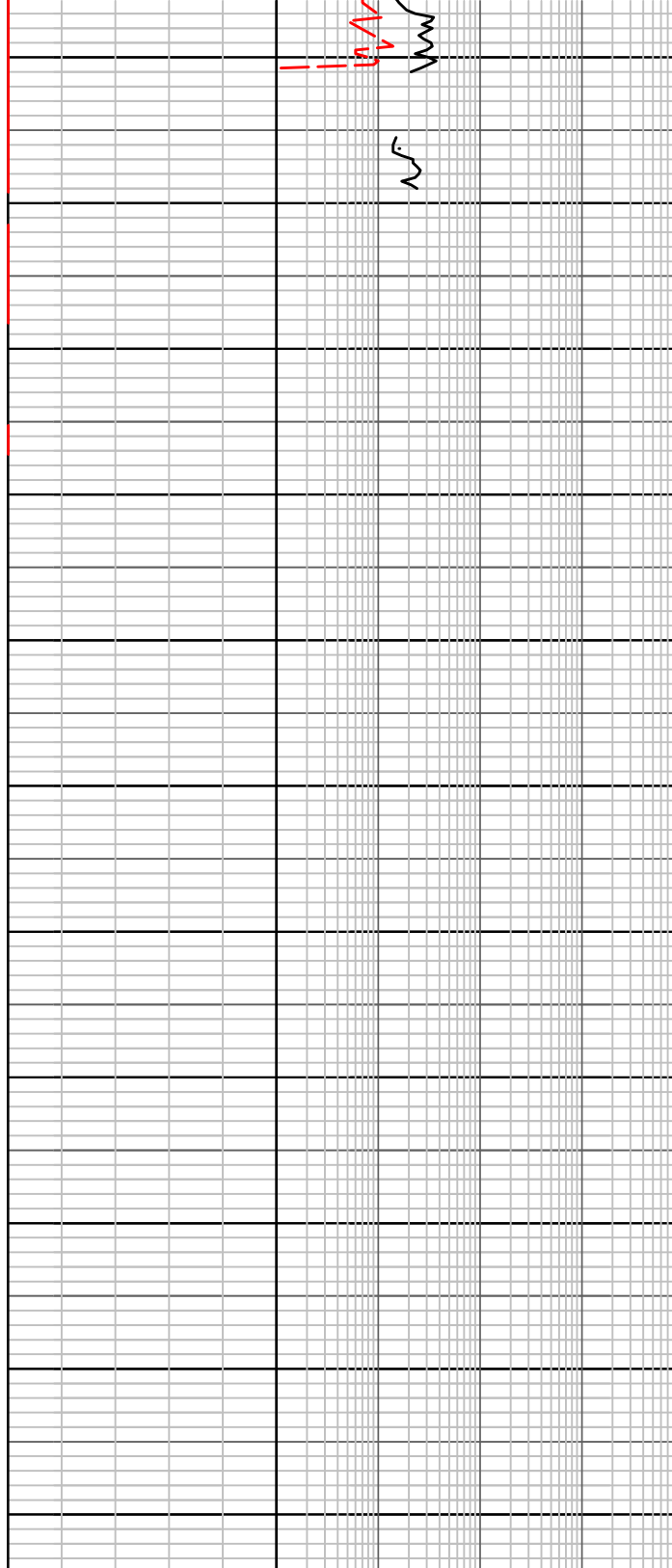
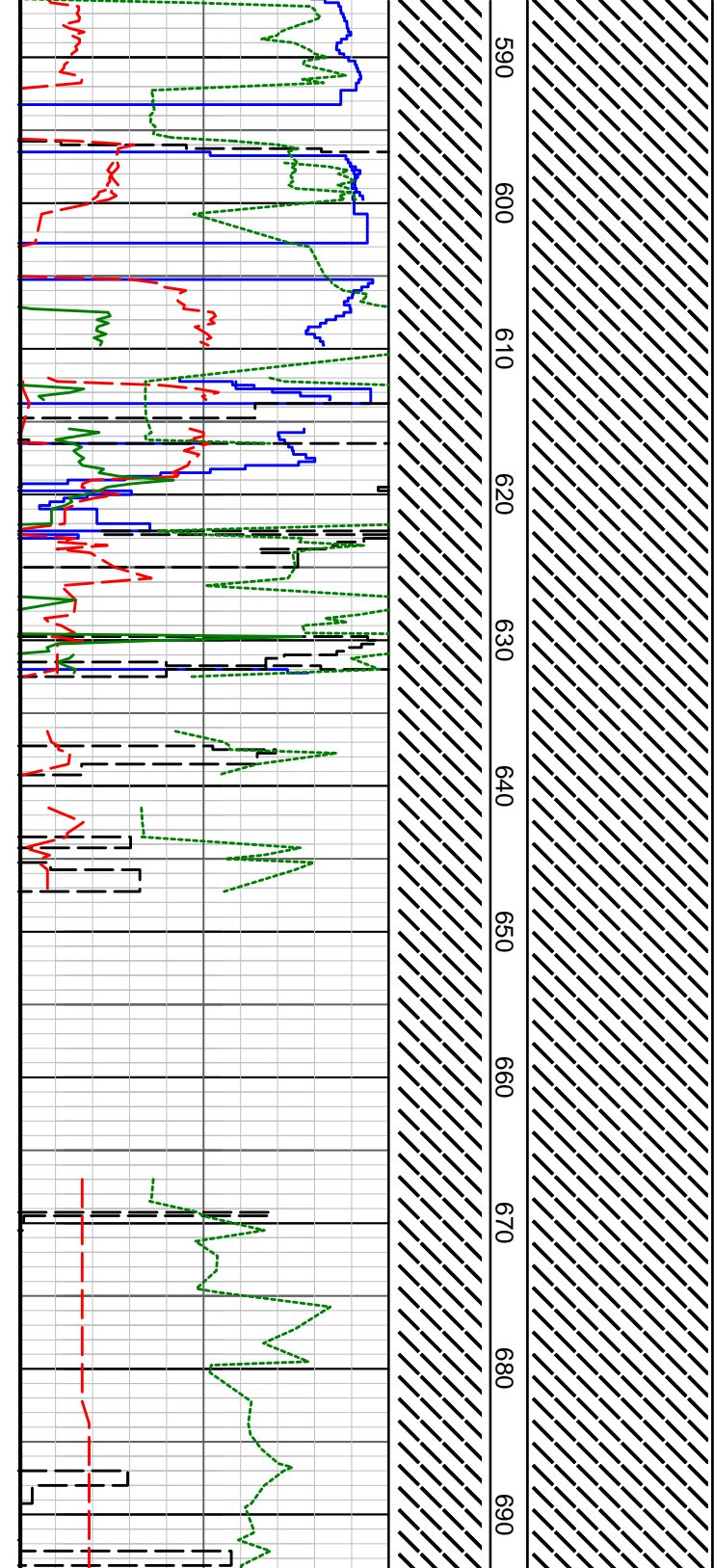
WOB 1 - 10 klbs
RPM 73
TQ 0.40 - 0.50
PP 10 - 420 psi

15/12/2006
ARR1 SEC DBS 8 1/2" JETS 3x20
Depth in: 534.5 m:
Depth out: 1767m/25.6 hrs

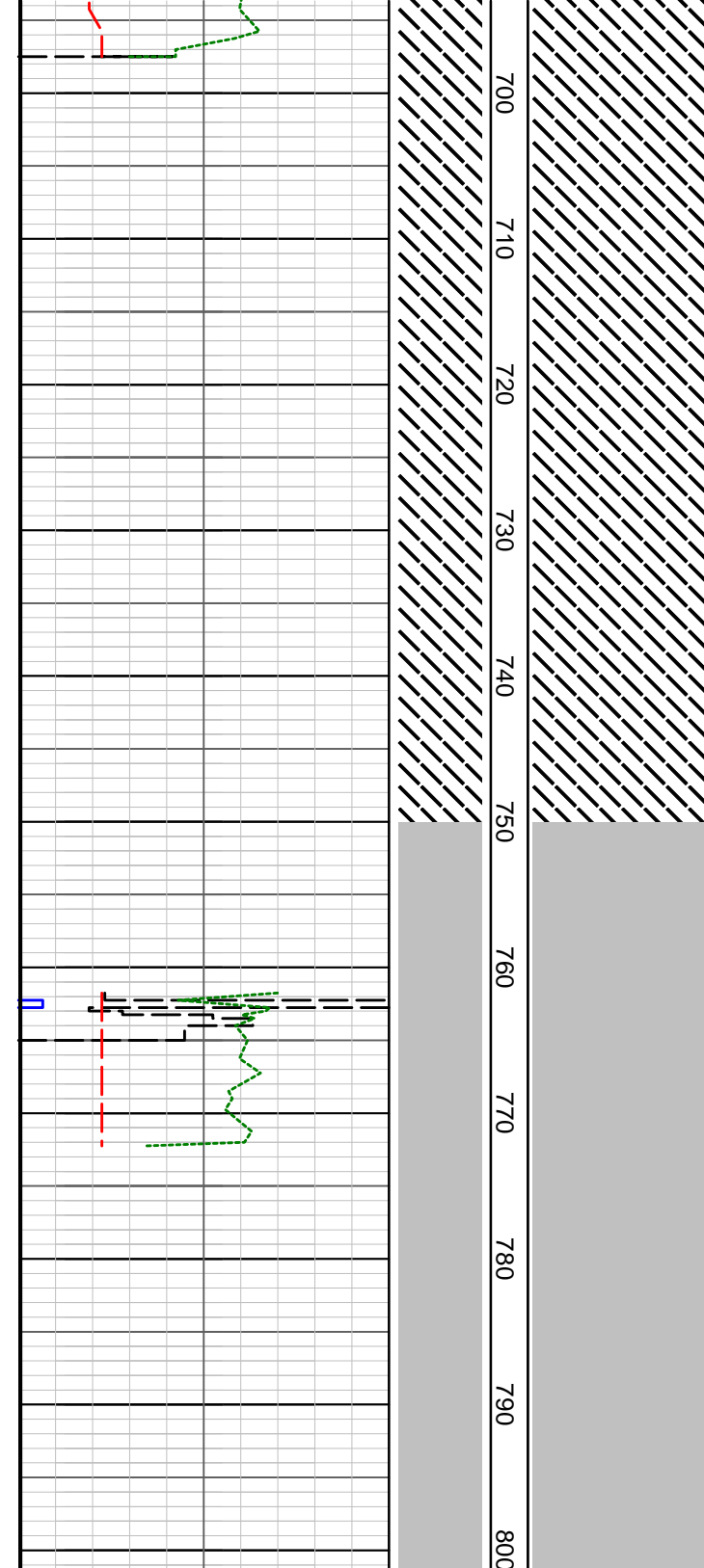
15/12/2006

Survey @ 510.63m
Incl 0.70°
Azim 62.00°
TVD 510.59m

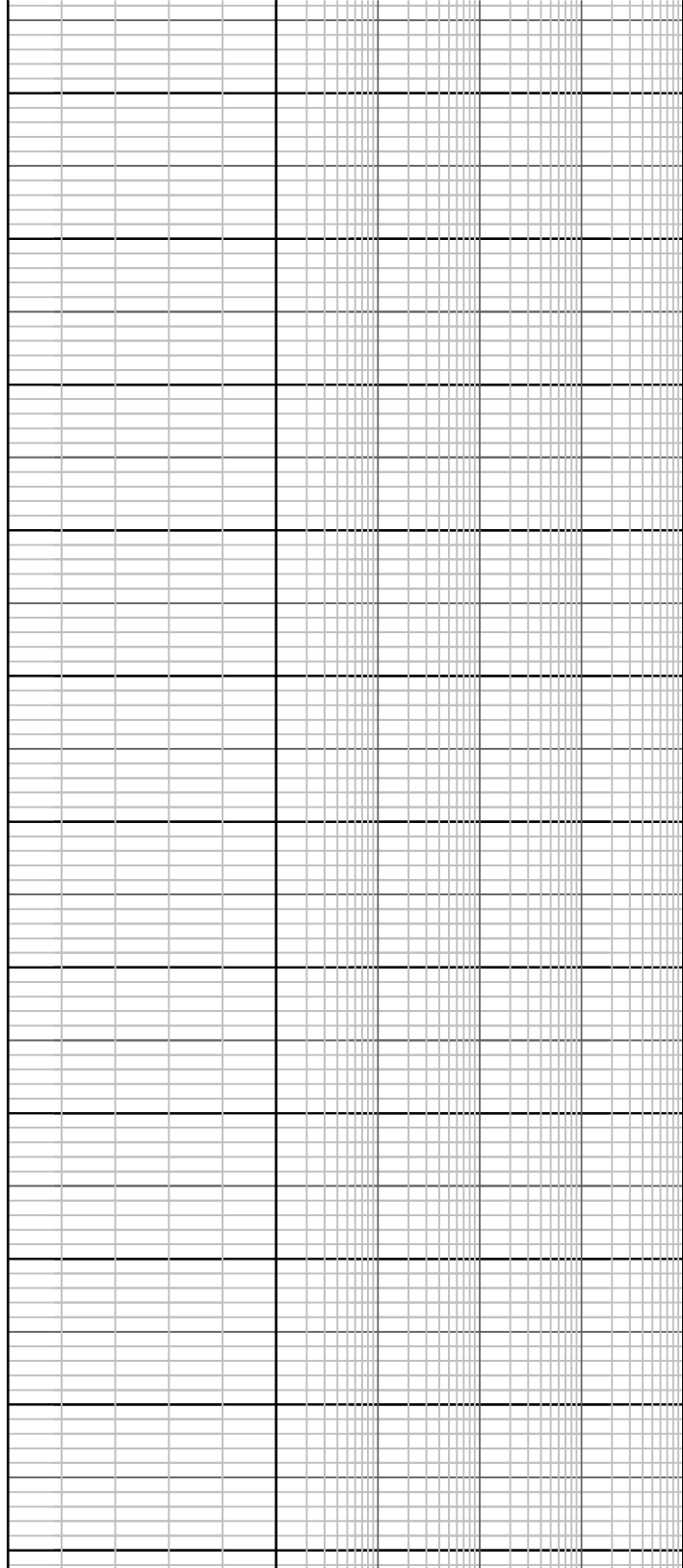




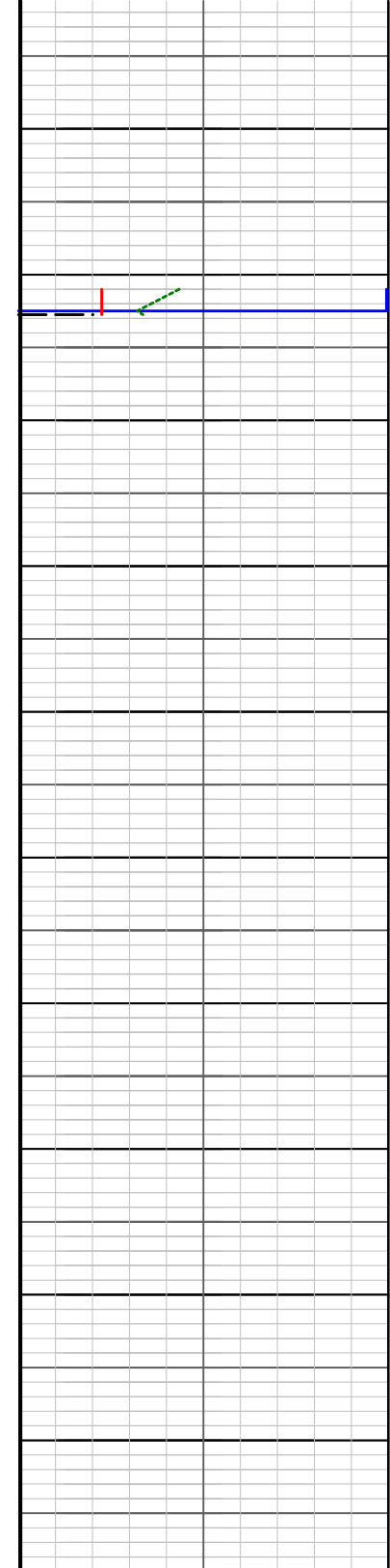
Survey @ 623.19m
Incl 1.40°
Azim 62.00°
TVD 623.14m



700
710
720
730
740
750
760
770
780
790
800

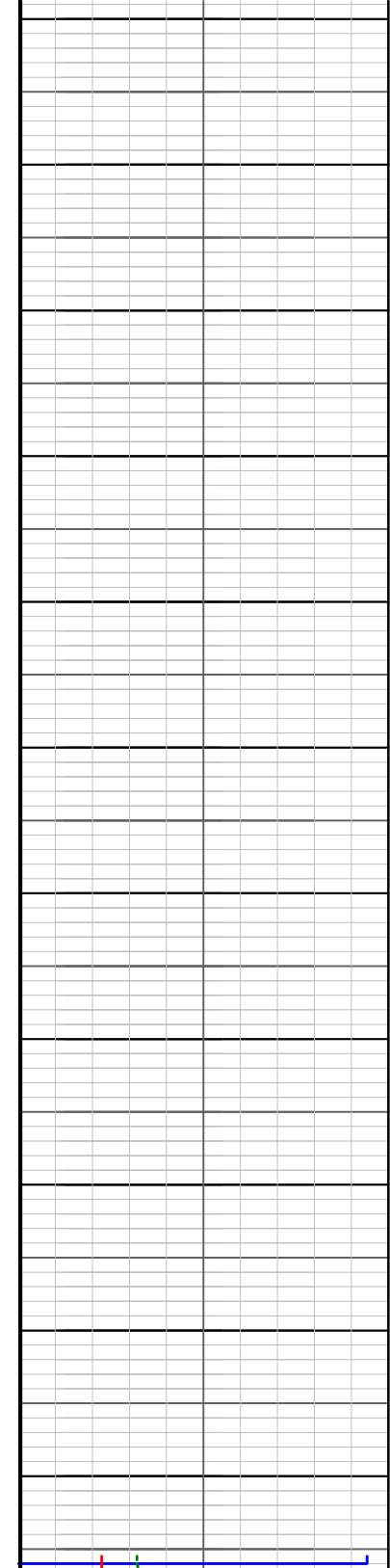


Survey @ 716.99m
Incl 2.30°
Azim 107.00°
TVD 716.89m

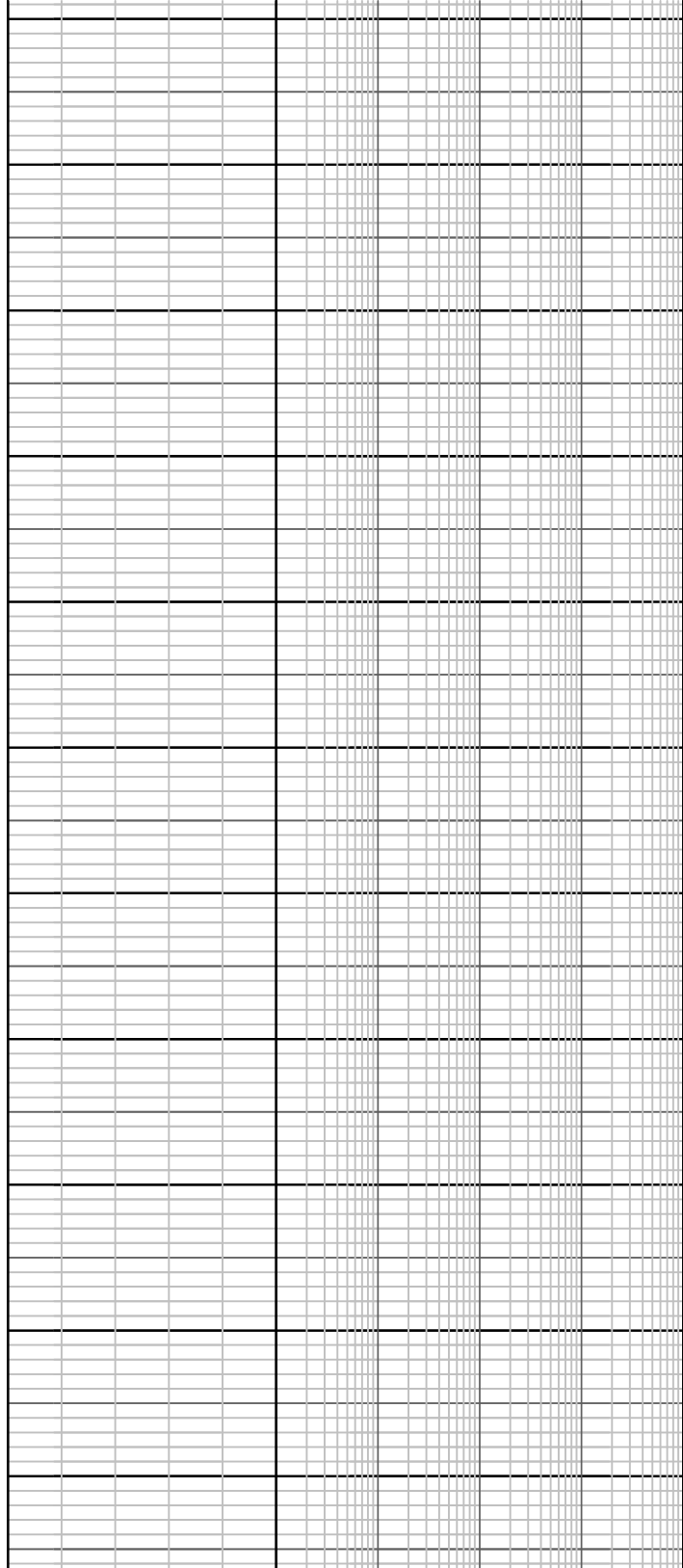


810
820
830
840
850
860
870
880
890
900

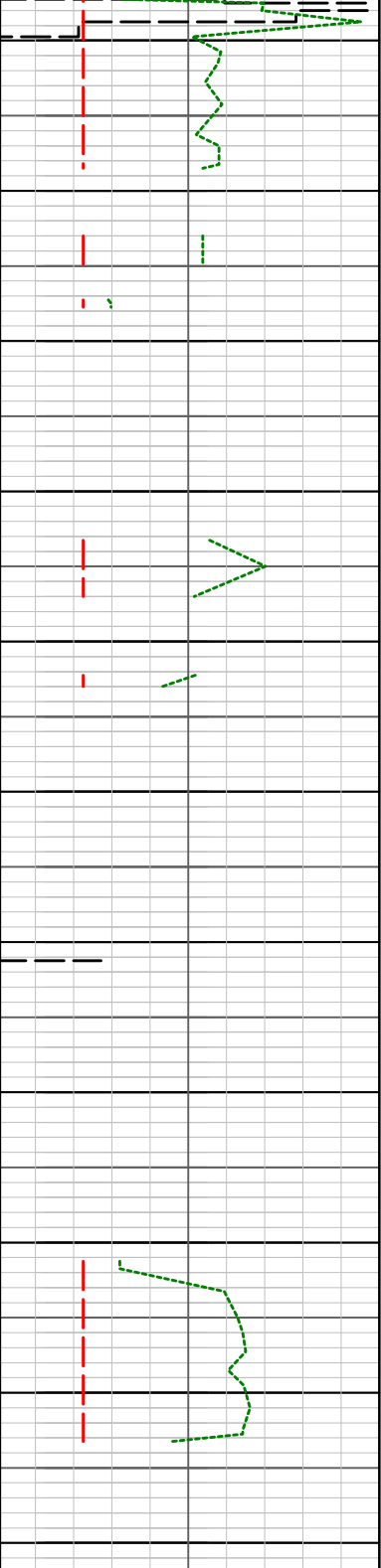
Survey @ 810.79m
Incl 3.70°
Azim 115.00°
TVD 810.56m



910
920
930
940
950
960
970
980
990
1000
1010



Survey @ 923.35m
Incl 2.50°
Azim 122.00°
TVD 922.94m



1020
1030
1040
1050
1060
1070
1080
1090
1100
1110
1120

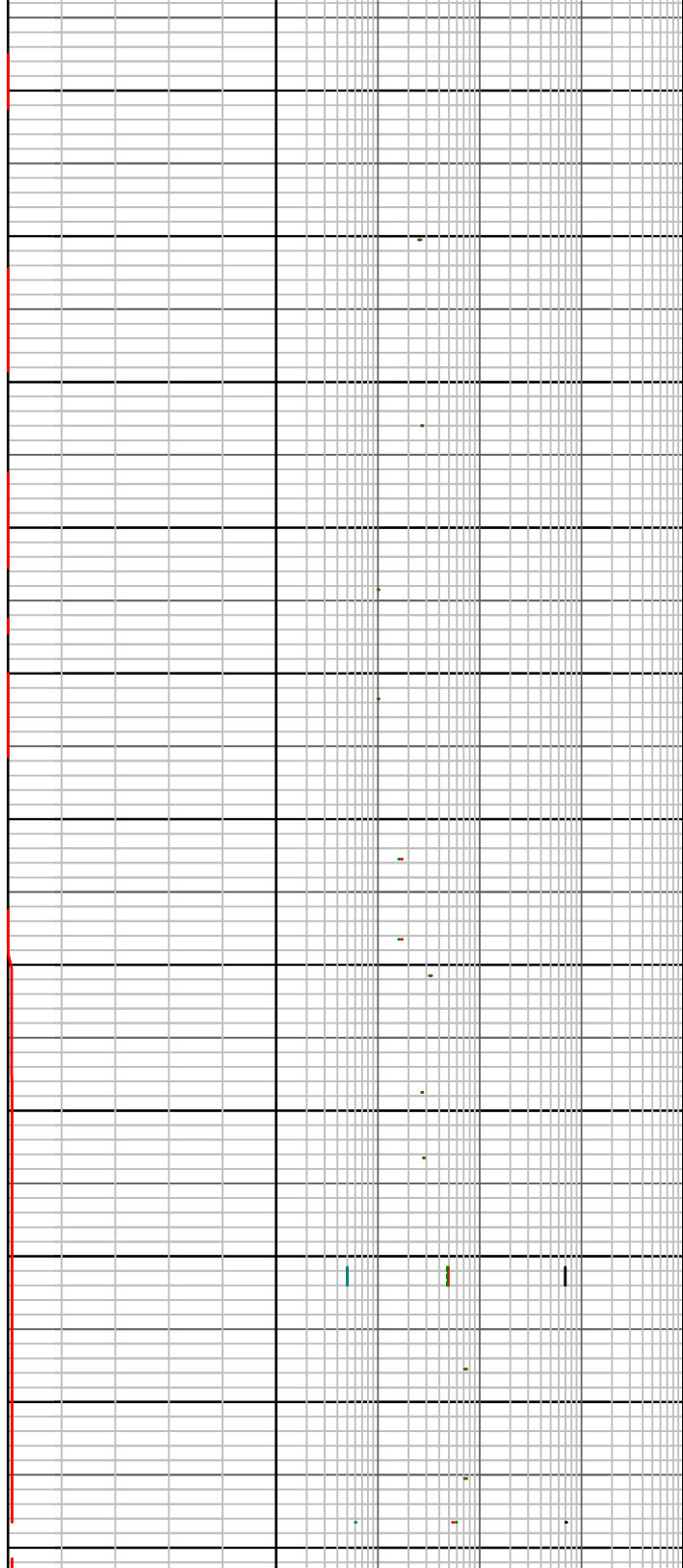
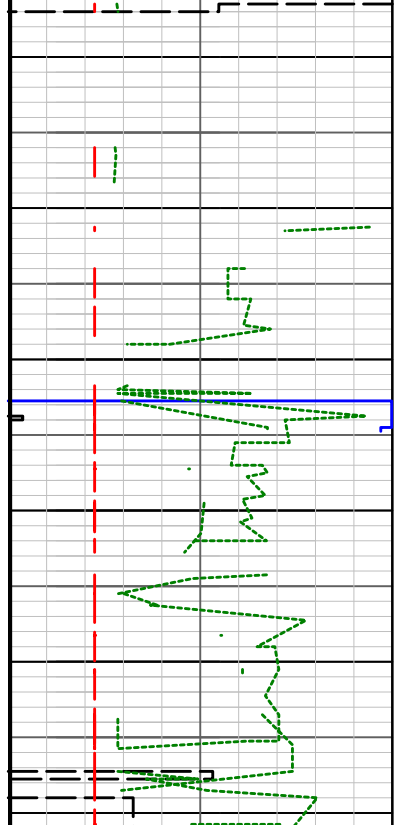
Survey @ 1035.91m
Incl 2.50°
Azim 128.00°
TVD 1035.39m

Survey @ 1110.95m
Incl 2.70°
Azim 124.00°
TVD 1110.36m

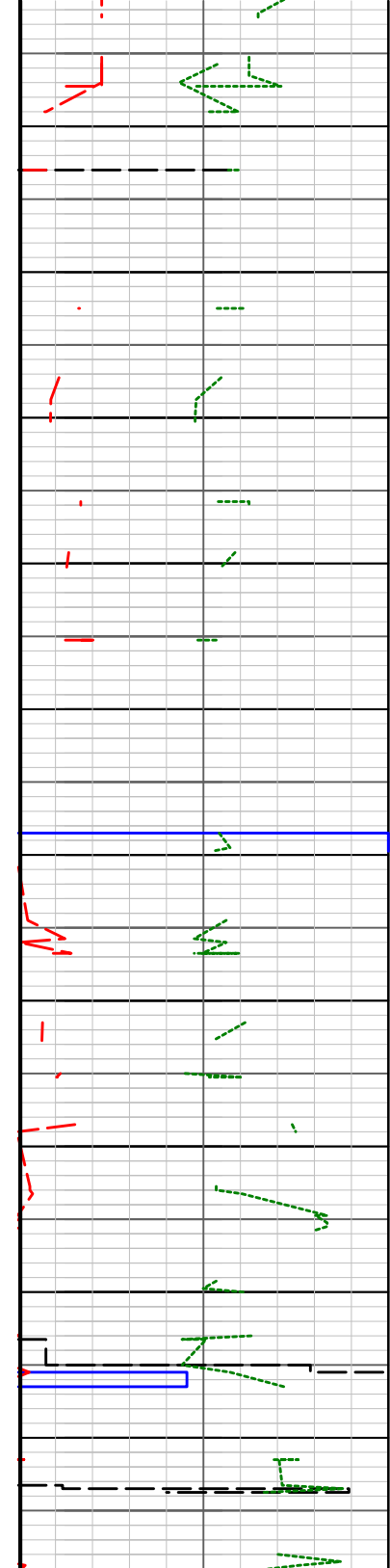
1130
1140
1150
1160
1170
1180
1190
1200
1210
1220
1230

WOB 1 - 10 klbs
RPM 49
TQ 14 - 20 klbs
PP 290 - 350 psi

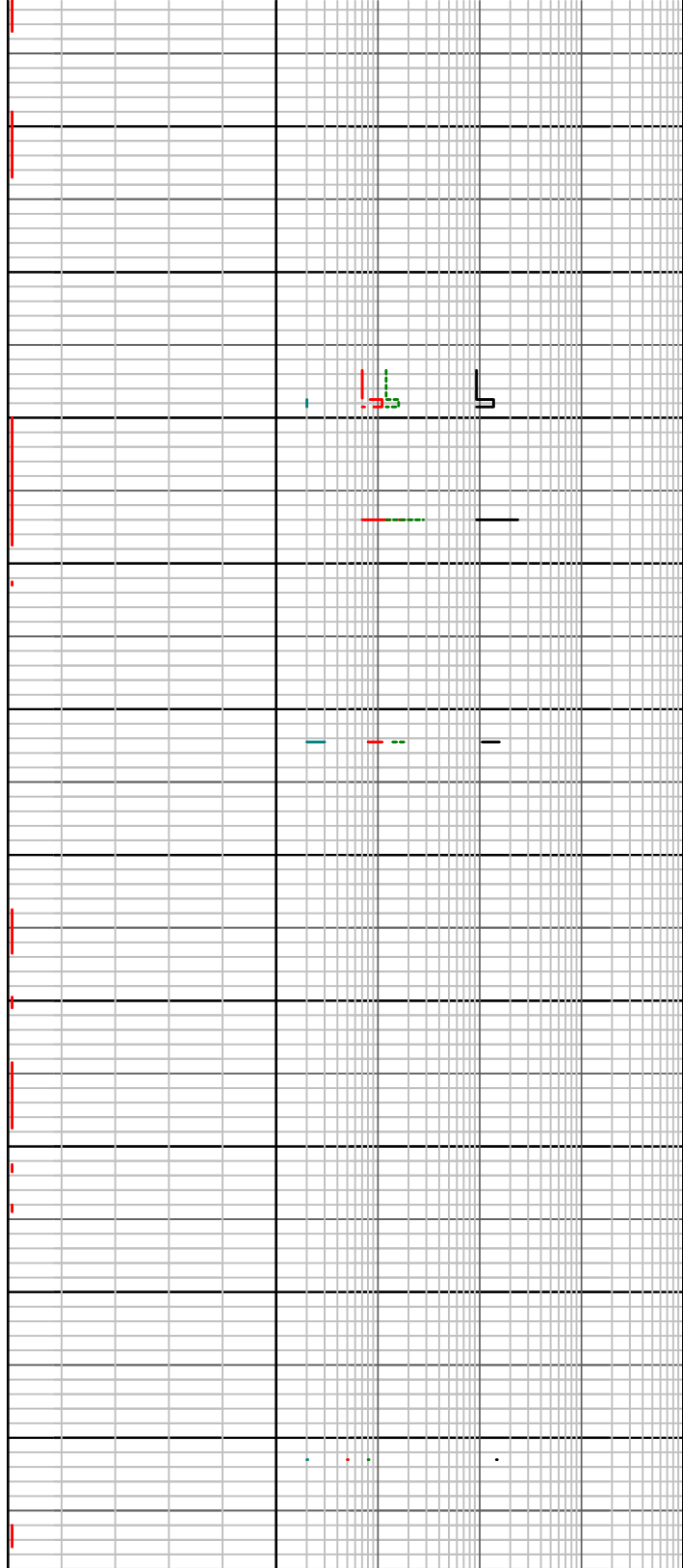
16/12/2006

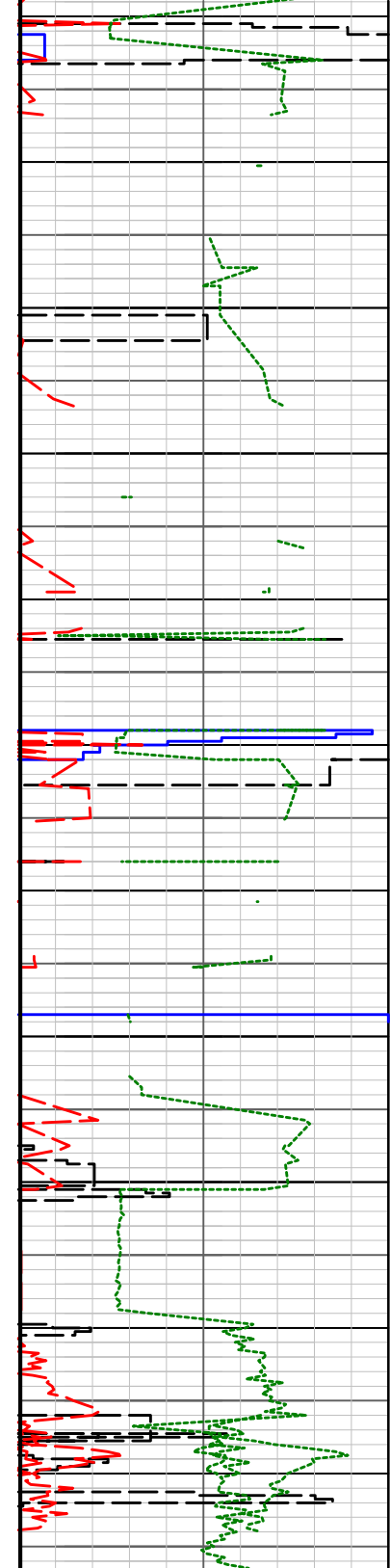


Survey @ 1204.75m
Incl 2.80°
Azim 125.00°
TVD 1204.05m

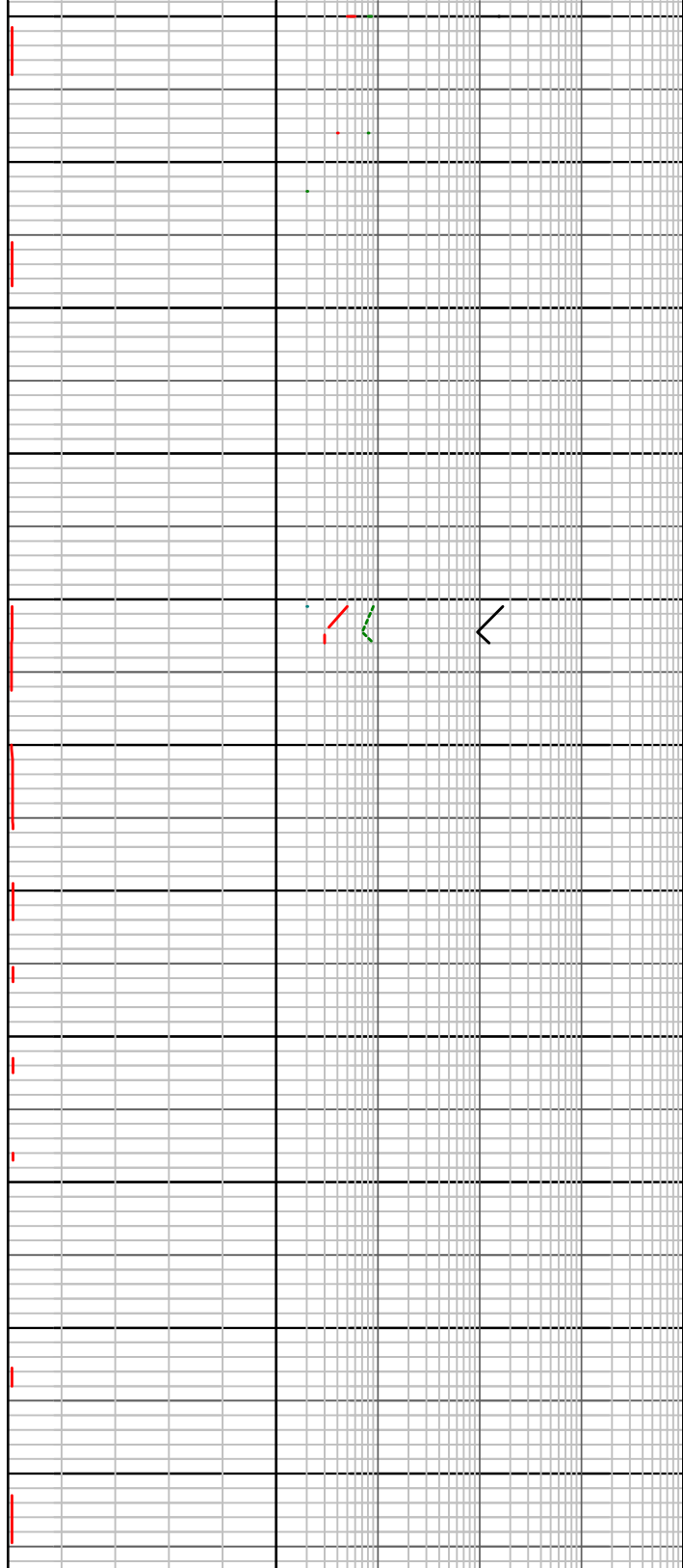


1240
1250
1260
1270
1280
1290
1300
1310
1320
1330
1



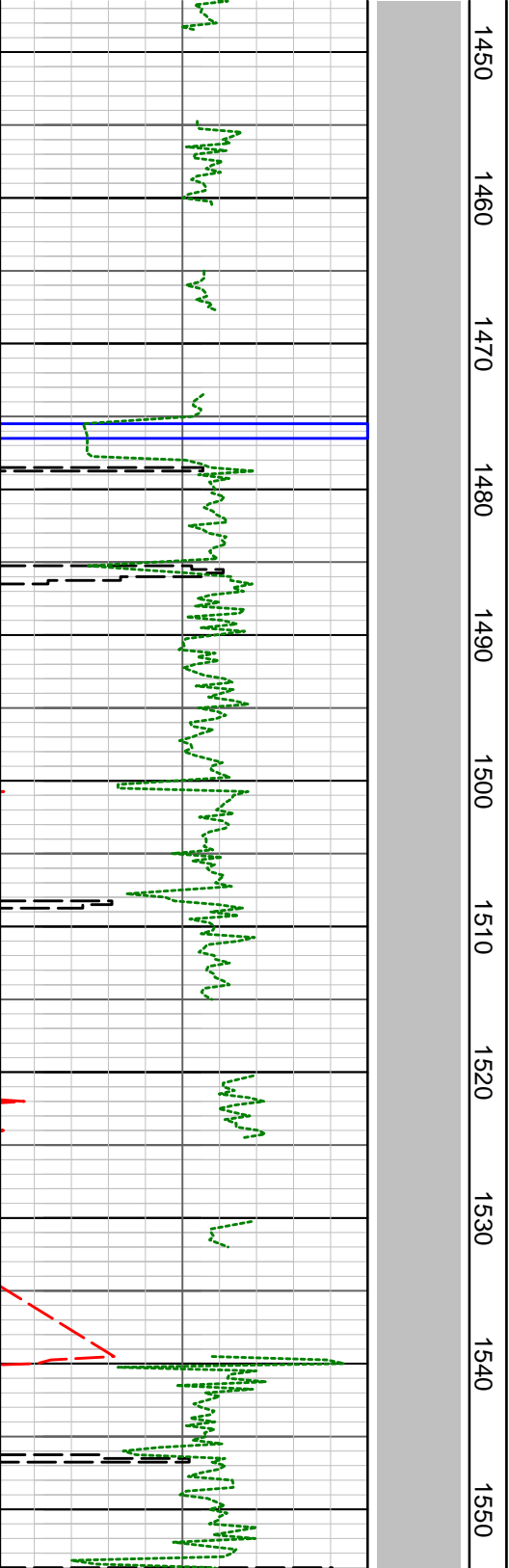


1340
1350
1360
1370
1380
1390
1400
1410
1420
1430
1440



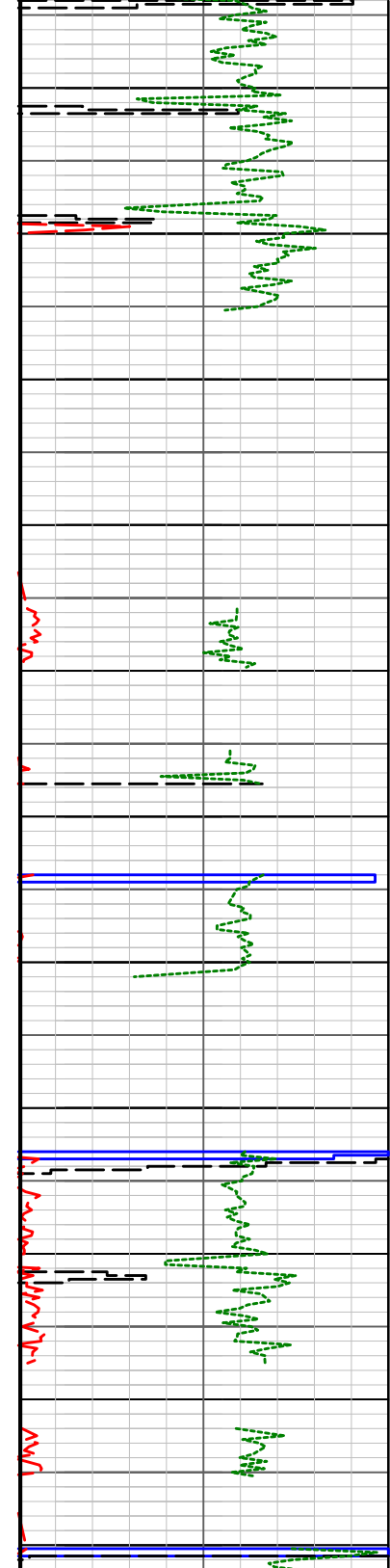
Incl 2.80°
Azim 124.00°
TVD 1335.21m

Survey @ 1411.11m
Incl 3.00°
Azim 118.00°
TVD 1410.15m

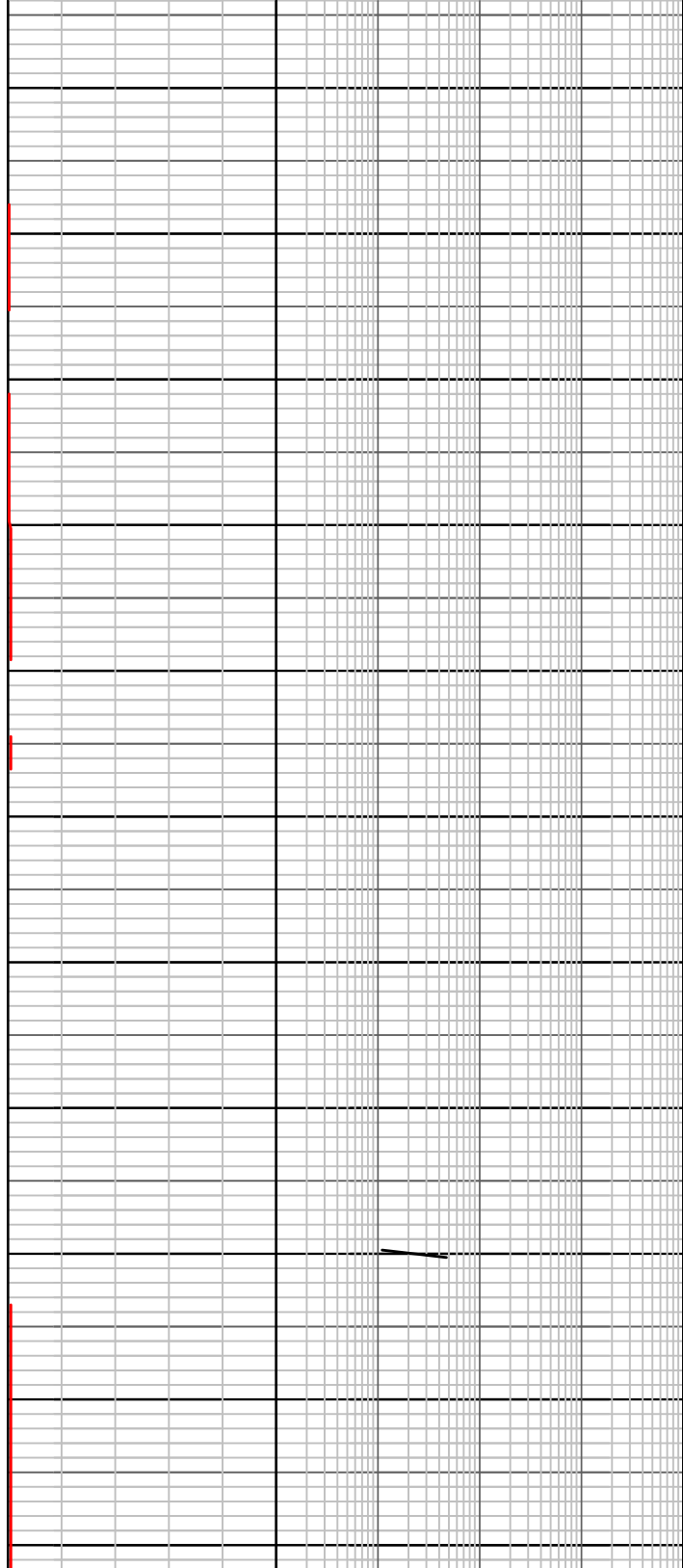


1450
1460
1470
1480
1490
1500
1510
1520
1530
1540
1550

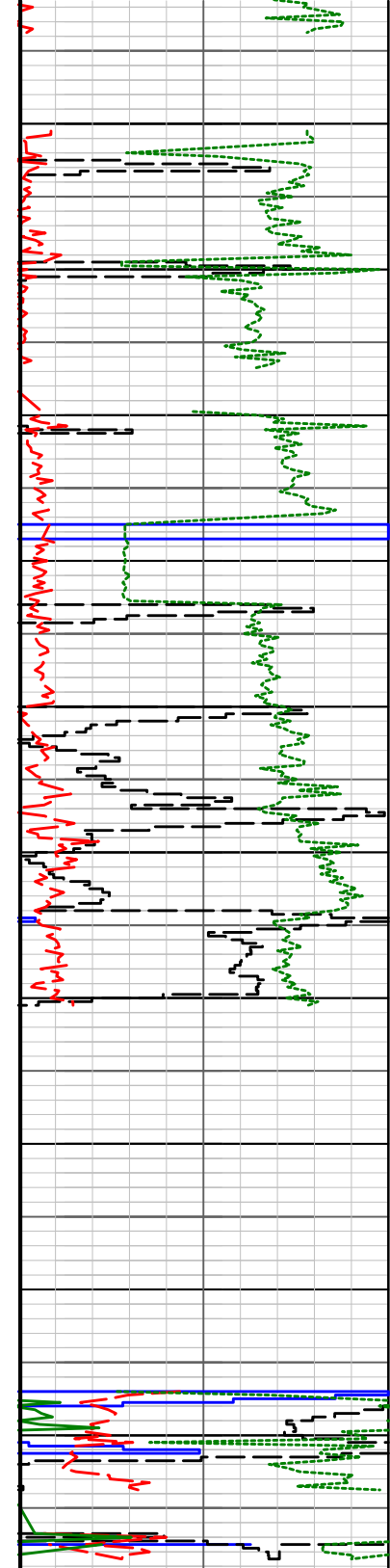
Survey @ 1504.91m
Incl 3.40°
Azim 105.00°
TVD 1503.81m



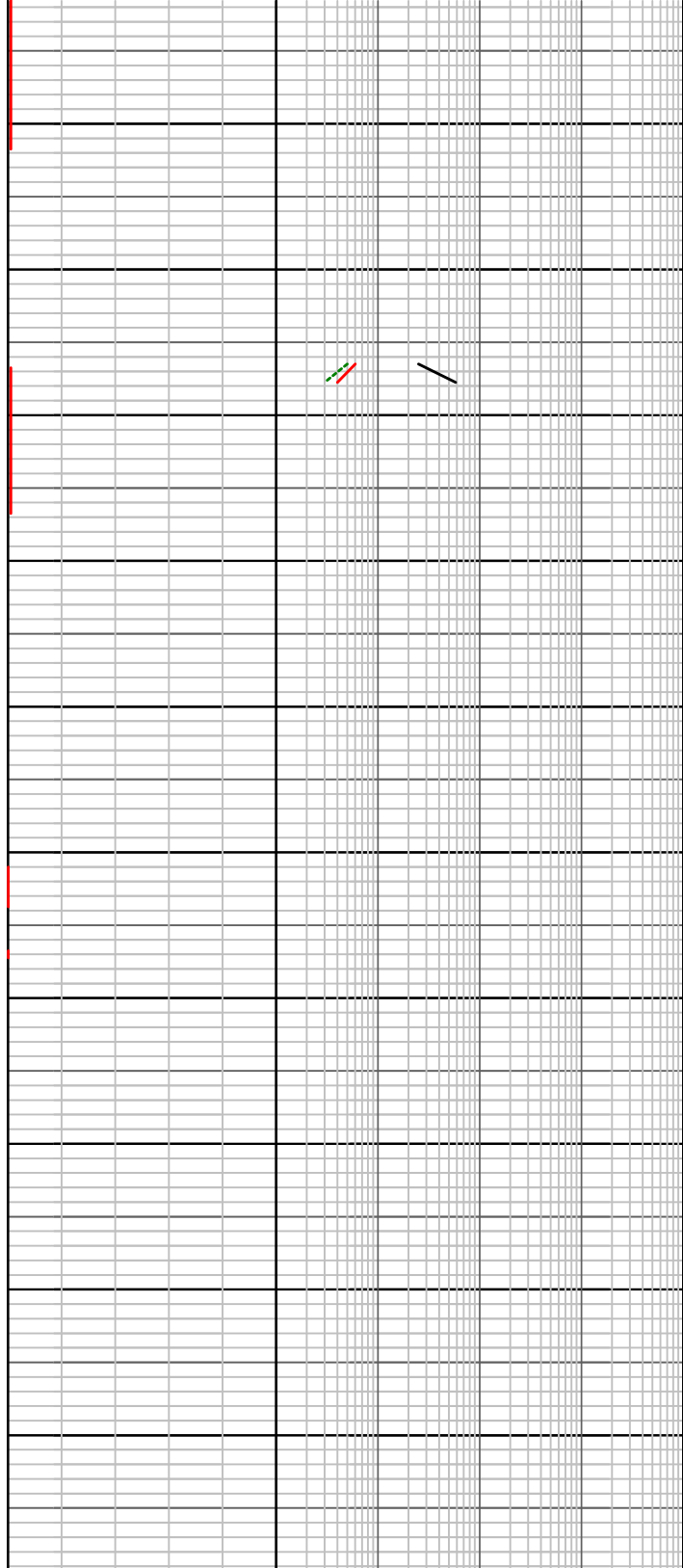
1560
1570
1580
1590
1600
1610
1620
1630
1640
1650
1660



Survey @ 1636.23m
Incl 2.70°
Azim 94.00°
TVD 11634.95m



1670
1680
1690
1700
1710
1720
1730
1740
1750
1760
1



Survey @ 1748.79m
Incl 2.00°
Azim 84.00°
TVD 1747.39m

